

PRODUCT SPECIFICATIONS

LED Light Engine Consistent fixture to fixture color within 3-step MacAdam ellipse • 2700K, 3000K, 3500K, or 4000K color temperatures are available with 80 CRI minimum • 2700K and 3000K also available with 90 CRI minimum.

Modular Optics 45° cutoff to source and source image • Available with 12° Spot, 24° Narrow Flood, 35° Flood and 50° wide flood field interchangeable optics • Additional distributions of 20°, 30°, 40°, 45° and 60° FWHM can be achieved with the use of the diffusing films and spot primary optic • Patented (US Patent 8,950,911) auto-adjusting optic holder maximizes luminaire efficiency by maintaining optimal LED optic position • Accommodates up to three (3) additional beam control lenses and/or filters.

Adjustability Acu-Aim™ precision geared hot-aiming achieves 370° rotation, 45° tilt • Optimized center beam optics translates light engine forward as it is aimed off nadir, ensuring maximum light and low brightness • Black aiming mechanism preserves dark aperture.

Reflector .040" aluminum angle-cut reflector in white paint, clear specular, black specular, clear diffuse, or wheat diffuse Alzak finish.

Trims Style Trim Ring, Self Flanged and Flangeless reflectors utilize torsion spring retention for tight, secure fit to ceiling • Trim ring features beveled knife edge for clean ceiling interface • Self Flanged reflectors with polished or optional white painted flange • For flangeless installations in drywall ceilings use the FMA3 flangeless adapter • For flangeless installations in wood, stone, or tile ceilings the SFM3*** must be used (specify ceiling thickness and adapter finish).

LED Driver Seven (7) driver options available to accommodate 120-277V input and multiple control protocols • For a list of compatible dimmers, refer to [ACULXLED3-DIM](#) • Power Factor > 0.9 • Field replaceable from below or above ceiling.

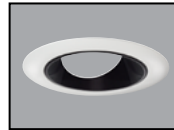
Life Rated for 50,000 hrs at 70% lumen maintenance.

Warranty - 5YR 5-year limited warranty. Complete warranty terms located at: http://www.acuitybrands.com/CustomResources/Terms_and_conditions.aspx

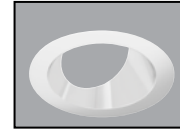
Codes/Labels UL and cUL listed for through branch wiring, damp or wet locations • Meets energy code Air Leakage requirements per ASTM E283 • ICAT housings are rated for direct contact with insulation • AX3 A 08LM/12LM (ICAT option) are compatible with spray foam insulation with an R-Value of 3.7 per inch or less • Union made.

New Construction Mounting Features patented (US Patent 8,038,113) Pro-VI™ bar hanger system, permitting quick placement of housing with 24" on-center joists or suspended ceilings • All fixtures except for AX3 A 20LM (ICAT option) also feature vertically adjustable mounting brackets (butterfly brackets) • Centerline indicators on plaster frame and patented (US Patent 8,277,090) Tru-Line™ Platform featuring +/- 1/2" translation aids fixture alignment after installation, prior to drywall.

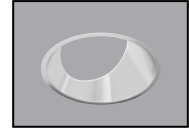
**3" LED UNIVERSAL RECESSED
 ADJUSTABLE/DOWNLIGHT/WALL WASH
 800/1200/1500/2000 LUMEN
 ROUND ANGLE-CUT REFLECTOR
 NEW CONSTRUCTION
 AX3 with 3AC Trim**



Trim Ring



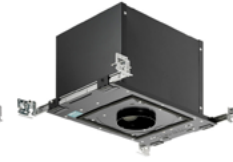
Self-Flanged



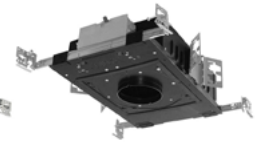
Flangeless



AX3 A



AX3 A
(20LM ICAT)



AX3 LPA
(Low Profile)

Junction Box Rated for 4 No. 12 AWG 90° C through branch circuit conductors and includes (6) 1/2", (1) 3/4", and (4) Non-metallic sheathed cable knock-outs • Push-in electrical connectors for field connections.

Housing/Mounting Frame Black steel plaster frame and housing painted for visually dark interior • V-Notch in plaster frame and Patented (US Patent 8,277,090) Tru-Line™ Platform featuring +/- 1/2" translation aids fixture alignment after installation, prior to drywall.

Ceiling Thickness 1/2" - 1 5/8" ceiling.

Specifications subject to change without notice.

ORDERING INFORMATION

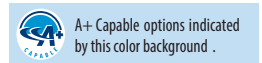
Example: AX3 A 12LM 30K 80CRI 24D FPC 120 ICAT 3AC BS WHR

Series / Housing Style	Lumens	CCT	CRI	Beam	Driver	Voltage ¹	Options
AX3 A New Construction Universal ADJ/DL/WW	08LM 800 Lumens	27K 2700K	80CRI	12D 12° beam	EZ1 eldoLED 0-10V, 1% dim	120	CP Chicago Plenum ICAT IC, Air-Tight NLIGHT ² nLight dimming pack controls
	12LM 1200 Lumens	30K 3000K	90CRI	24D 24° beam	EZB eldoLED 0-10V, <1% dim		
AX3 LPA Low Profile Universal ADJ/DL/WW	15LM 1500 Lumens	35K 3500K		35D 35° beam	FPC Phase cut dimming, 5% dim forward phase, 1% dim	MVOLT (120-277)	
	20LM 2000 Lumens	40K 4000K		50D 50° beam	ECOS2 Lutron Hi-Lume A series 2-wire with forward phase, 1% dim		
					ECOS3 Lutron Hi-Lume A series 3-wire with EcoSystem, 1% dim		
					DMXR DMX,RDM Driver, 1% dim		
					DALI DALI Driver, 1% dim		

Trim Style	Reflector Finish	Flange Style / Finish	Environment	Ceiling Installation
ADJUSTABLE ACCENT	BS Black Specular	FLANGED	WET Wet location	FLANGED
3AC Angle-Cut Reflector	CD Clear Diffuse	WHR White Trim Ring		Ceiling ≤ .875"
	CS Clear Specular	ABZR Aged Bronze Trim Ring		Ceiling 0.875" - 1.25"
	WTD Wheat Diffuse	SCR Satin Chrome Trim Ring		Ceiling 1.25" - 1.625"
	W White Paint	SF Self-Flanged		FLANGELESS, GYPSUM
		WHSF Self-Flanged, White painted flange		Ceiling ≤ .875"
		FLANGELESS		Ceiling 0.875" - 1.25"
		FM Flangeless		Ceiling 1.25" - 1.625"
			FLANGELESS, WOOD/STONE/TILE ³	
			SFM3/087 (B,W) Ceiling ≤ 0.875"	
			SFM3/125 (B,W) Ceiling 0.875" - 1.25"	
			SFM3/163 (B,W) Ceiling 1.25" - 1.625"	

Ordering Notes

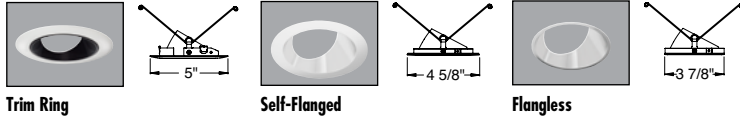
¹ MVOLT standard on EZ1, EZB, ECOS3, DMXR, DALI unless NLIGHT specified. Must be 120 for FPC or ECOS2.
² Must specify 120 or 277 volts. NLIGHT only available with EZ1 or EZB.
³ Specify finish : B = Black, W = White.



3" LED UNIVERSAL RECESSED ADJUSTABLE/DOWNLIGHT/WALL WASH 800/1200/1500/2000 LUMEN ROUND ANGLE-CUT REFLECTOR NEW CONSTRUCTION AX3 with 3AC Trim

TRIM SELECTION

3AC Angle-Cut Reflector

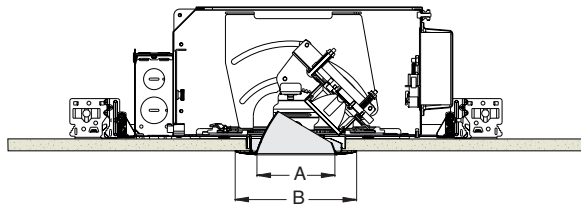


	CCT/CRI:	80CRI 27K, 30K, 35K, 40K 90CRI 30K
	Optic:	12D, 24D, 35D, 50D
	Trim Finish:	CS, CD, WTD

	Construction:	ICAT
	CCT/CRI:	90CRI 27K, 30K
	Optic:	12D, 24D, 35D, 50D
	Trim Finish:	CS, CD, WTD

*With WET option

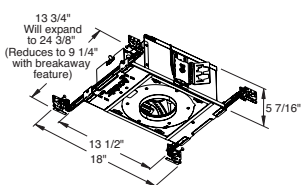
DIMENSIONS



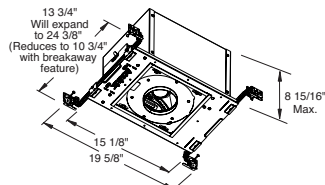
4 1/4" CEILING CUTOUT
(REFER TO INSTRUCTION SHEET FOR
FLANGELESS CEILING CUTOUT)

	A	B
Trim Ring	3 1/4"	5"
Self Flanged	3 3/8"	4 5/8"
Flangeless	3 3/8"	3 7/8"

NEW CONSTRUCTION

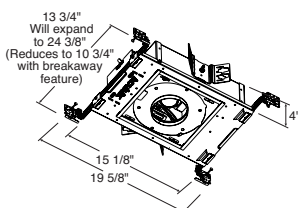


AX3 A



AX3 A
20LM ICAT

LOW PROFILE



AX3 LPA

ELECTRICAL DATA

Lumen Package	800		1200		1500		2000	
Voltage	120	277	120	277	120	277	120	277
Input Power	11.1W	11.3W	17.0W	17.5W	22.3W	22.6W	29.5W	29.3W
Input Current	0.08	0.04	0.13	0.06	0.17	0.08	0.23	0.10
Frequency	50/60Hz		50/60Hz		50/60Hz		50/60Hz	
Power Factor	>0.9	>0.9	>0.9	>0.9	>0.9	>0.9	>0.9	>0.9

ACCESSORIES

Cat. #	Description
3AXOPT/12D	12° Spot Optic
3AXOPT/24D	24° Narrow Flood Optic
3AXOPT/35D	35° Flood Optic
3AXOPT/50D	50° Wide Flood Optic
AF3/10	10° Film (Use with Spot Optic)
AF3/20	20° Film (Use with Spot Optic)
AF3/30	30° Film (Use with Spot Optic)
AF3/40	40° Film (Use with Spot Optic)
AF3/50	50° Film (Use with Spot Optic)
AF3/60x1	60°x1° Film (Use with Spot Optic)
CGF 200 MPINK	Med. Pink Color Filter
CGF 200 WRED	Warm Red Color Filter
CGF 200 DLTBLUE	Daylight Blue Color Filter
CGF 200 MBLU	Med. Blue Color Filter
CGF 200 MAMB	Med. Amber Color Filter
CGF 200 MGRN	Med. Green Color Filter
DGF 200 DRED	Red Dichroic Lens
DGF 200 MGRN	Med. Green Dichroic Lens
DGF 200 MBLU	Med. Blue Dichroic Lens
DGF 200 DYEL	Yellow Dichroic Lens
DGF 200 MAGEN	Magenta Dichroic Lens
DGF 200 CYAN	Blue Green Dichroic Lens
DCCF 200 HL4250	Daylight Blue Correction Lens
DIFF 200	Diffuse Spread Lens
SOLITE 200	Uniformity Lens
UVF 200	UV Filter Lens
PRISM 200	Prismatic Lens
LSPREAD 200	Linear Spread Lens
HCLBL 200	Hexcell Louver
HB1	(2) Real Nail 3 Bar Hangers
HB26	(2) 26" C-Channel Bar Hangers
HB50	(2) 50" C-Channel Bar Hangers
LB27	(2) 27" Linear Bar Hangers
EMI20	20W Emergency Lighting Inverter

To order, specify catalog number.

DIFFUSING FILMS

To achieve the desired beam angle (FWHM), specify the following primary LED optic on the luminaire and order the diffusing film from the table below

Desired FWHM	Primary Optic	Film
12°	12D	-
20°	12D	AF3/10
24°	24D	-
30°	12D	AF3/20
35°	35D	-
40°	12D	AF3/30
45°	12D	AF3/40
50°	50D	-
60°	12D	AF3/50
20°x60°	12D	AF3/60x1

3" LED UNIVERSAL RECESSED ADJUSTABLE/DOWNLIGHT/WALL WASH

800/1200/1500/2000 LUMEN

ROUND ANGLE-CUT REFLECTOR NEW CONSTRUCTION

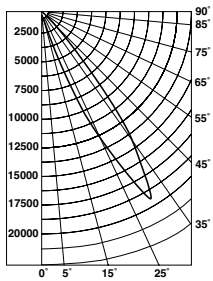
AX3 with 3AC Trim

PHOTOMETRICS

SPOT
PHOTOMETRIC REPORT
Test Report: PTO4152501
Catalog No: AX3 A 20LM 30K 80CRI
12D FPC 120 3AC CS
Watts: 26.2
Lumens: 1847
Luminaire LPW: 70

Candlepower Distribution (Candelas)

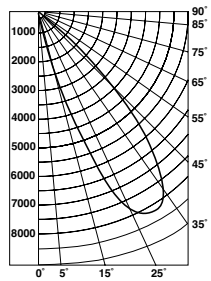
Degrees	Vertical Candela
0°	440
5°	358
10°	937
15°	1941
20°	5893
25°	13906
30°	19322
35°	14239
40°	6103
45°	1659
50°	165
55°	52
60°	7
65°	1
70°	0
75°	0
80°	0
85°	0
90°	0



NARROW FLOOD
PHOTOMETRIC REPORT
Test Report: PTO4152701
Catalog No: AX3 A 20LM 30K 80CRI
24D FPC 120 3AC CS
Watts: 26.2
Lumens: 1918
Luminaire LPW: 73

Candlepower Distribution (Candelas)

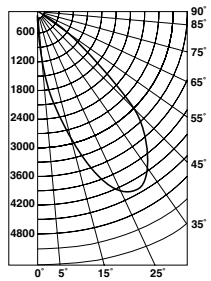
Degrees	Vertical Candela
0°	514
5°	497
10°	880
15°	2232
20°	4959
25°	7292
30°	8215
35°	7774
40°	6177
45°	3722
50°	984
55°	143
60°	55
65°	2
70°	0
75°	0
80°	0
85°	0
90°	0



FLOOD
PHOTOMETRIC REPORT
Test Report: PTO4152801
Catalog No: AX3 A 20LM 30K 80CRI
35D FPC 120 3AC CS
Watts: 26.2
Lumens: 1936
Luminaire LPW: 74

Candlepower Distribution (Candelas)

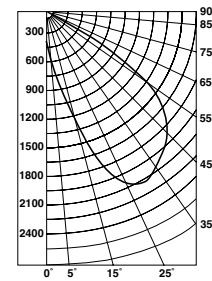
Degrees	Vertical Candela
0°	567
5°	1156
10°	1934
15°	2926
20°	3773
25°	4225
30°	4360
35°	4164
40°	3713
45°	3009
50°	1842
55°	991
60°	488
65°	7
70°	0
75°	0
80°	0
85°	0
90°	0



WIDE FLOOD
PHOTOMETRIC REPORT
Test Report: PTO4152901
Catalog No: AX3 A 20LM 30K 80CRI
50D FPC 120 3AC CS
Watts: 26.2
Lumens: 1716
Luminaire LPW: 65

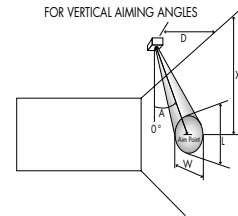
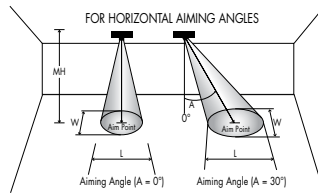
Candlepower Distribution (Candelas)

Degrees	Vertical Candela
0°	427
5°	615
10°	906
15°	1292
20°	1735
25°	2032
30°	2126
35°	2074
40°	1989
45°	1906
50°	1771
55°	1345
60°	673
65°	13
70°	1
75°	0
80°	0
85°	0
90°	0



LUMEN OUTPUT MULTIPLIERS

Color Temperature	CRI	Multiplier	Lumen Package	Multiplier
2700K	80	0.95	800	0.40
3000K	80	1.00	1200	0.61
3500K	80	1.05	1500	0.75
4000K	80	1.10	2000	1.00
2700K	90	0.83		
3000K	90	0.87		



CBCP • Centerbeam candlepower
FC • Footcandles at beam center (aim point)

In vertical aiming applications, aim point (X) is determined by dividing distance from the wall (D) by the tangent of the desired aim angle (A) (0.5774 for 30°, 1.0 for 45°).



Beam Type	Beam Spread	CBCP	0°				30°				30°				45°			
			MH	FC	L	W	FC	L	W	D	FC	X	L	W	FC	X	L	W
SP	12°	19322	6	537	1.6	1.6	349	2.1	1.8	3	268	5.2	3.5	1.6	759	3.0	1.6	1.1
			8	302	2.1	2.1	196	2.8	2.4	4	151	6.9	4.5	2.1	427	4.0	2.2	1.5
			10	193	2.7	2.7	126	3.6	3.1	5	97	8.7	5.6	2.7	273	5.0	2.7	1.9
			12	134	3.2	3.2	87	4.3	3.7	6	67	10.4	6.7	3.2	190	6.0	3.2	2.2
			14	99	3.7	3.7	64	5.0	4.3	7	49	12.1	7.8	3.7	139	7.0	3.8	2.6
NFL	24°	8215	4	513	1.8	1.8	333	2.5	2.1	2	257	3.5	4.4	1.8	726	2.0	1.9	1.3
			6	228	2.8	2.8	148	3.7	3.2	3	114	5.2	6.6	2.8	323	3.0	2.9	2.0
			8	128	3.7	3.7	83	5.0	4.2	4	64	6.9	8.7	3.7	182	4.0	3.9	2.6
			10	82	4.6	4.6	53	6.2	5.3	5	41	8.7	10.9	4.6	116	5.0	4.9	3.3
FL	35°	4360	6	57	5.5	5.5	37	7.5	6.4	6	29	10.4	13.1	5.5	81	6.0	5.8	3.9
			4	273	2.7	2.7	177	3.8	3.2	2	136	3.5	8.4	2.7	385	2.0	3.1	1.9
			6	121	4.1	4.1	79	5.7	4.7	3	61	5.2	12.6	4.1	171	3.0	4.6	2.9
			8	68	5.5	5.5	44	7.6	6.3	4	34	6.9	16.8	5.5	96	4.0	6.2	3.9
WFL	50°	2126	10	44	6.8	6.8	28	9.5	7.9	5	22	8.7	21.0	6.8	62	5.0	7.7	4.8
			12	30	8.2	8.2	20	11.4	9.5	6	15	10.4	25.2	8.2	43	6.0	9.3	5.8
			4	133	4.1	4.1	86	6.0	4.7	2	66	3.5	37.5	4.1	188	2.0	5.5	2.9
			6	59	6.1	6.1	38	8.9	7.1	3	30	5.2	56.3	6.1	84	3.0	8.3	4.3
			8	33	8.2	8.2	22	11.9	9.4	4	17	6.9	75.0	8.2	47	4.0	11.1	5.8
			10	21	10.2	10.2	14	14.9	11.8	5	11	8.7	93.8	10.2	30	5.0	13.9	7.2
			12	15	12.3	12.3	10	17.9	14.2	6	7	10.4	112.5	12.3	21	6.0	16.6	8.7

3" LED UNIVERSAL RECESSED ADJUSTABLE/DOWNLIGHT/WALL WASH

800/1200/1500/2000 LUMEN

ROUND ANGLE-CUT REFLECTOR NEW CONSTRUCTION

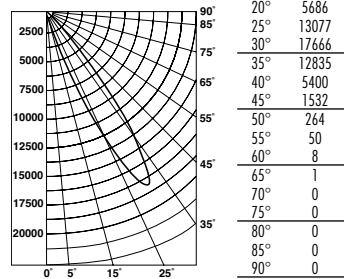
AX3 with 3AC Trim with WET option

PHOTOMETRICS

SPOT PHOTOMETRIC REPORT

Test Report: PTO4152508
Catalog No: AX3 A 20LM 30K 80CRI
12D FPC 120 3AC CS WET

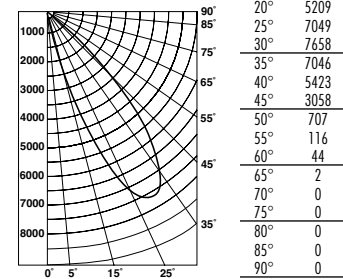
Watts: 26.2
Lumens: 1723
Luminaire LPW: 66



NARROW FLOOD PHOTOMETRIC REPORT

Test Report: PTO4152708
Catalog No: AX3 A 20LM 30K 80CRI
24D FPC 120 3AC CS WET

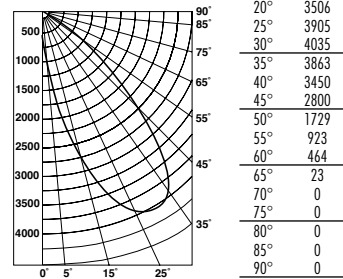
Watts: 26.2
Lumens: 1771
Luminaire LPW: 68



FLOOD PHOTOMETRIC REPORT

Test Report: PTO4152808
Catalog No: AX3 A 20LM 30K 80CRI
35D FPC 120 3AC CS WET

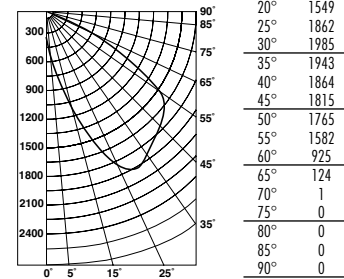
Watts: 26.2
Lumens: 1808
Luminaire LPW: 69



WIDE FLOOD PHOTOMETRIC REPORT

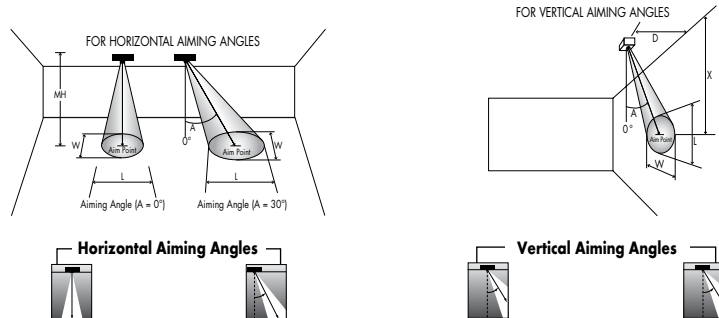
Test Report: PTO4152908
Catalog No: AX3 A 20LM 30K 80CRI
50D FPC 120 3AC CS WET

Watts: 26.2
Lumens: 1574
Luminaire LPW: 60



LUMEN OUTPUT MULTIPLIERS

Color Temperature	CRI	Multiplier	Lumen Package	Multiplier
2700K	80	0.95	800	0.40
3000K	80	1.00	1200	0.61
3500K	80	1.05	1500	0.75
4000K	80	1.10	2000	1.00
2700K	90	0.83		
3000K	90	0.87		



CBCP • Centerbeam candlepower
FC • Footcandles at beam center (aim point)

In vertical aiming applications, aim point (X) is determined by dividing distance from the wall (D) by the tangent of the desired aim angle (A) (0.5774 for 30°, 1.0 for 45°).

Beam Type	Beam Spread°	CBCP	0°			30°			30°			45°						
			MH	FC	L W	FC	L W	D	FC	X L W	FC	X L W						
SP	12°	17666	6	491	1.6	1.6	319	2.1	1.8	3	245	5.2	3.4	1.6	694	3.0	1.6	1.1
			8	276	2.1	2.1	179	2.8	2.4	4	138	6.9	4.5	2.1	390	4.0	2.2	1.5
			10	177	2.7	2.7	115	3.6	3.1	5	88	8.7	5.6	2.7	250	5.0	2.7	1.9
			12	123	3.2	3.2	80	4.3	3.7	6	61	10.4	6.7	3.2	173	6.0	3.2	2.2
			14	90	3.7	3.7	59	5.0	4.3	7	45	12.1	7.8	3.7	127	7.0	3.8	2.6
NFL	24°	4338	4	479	1.8	1.8	311	2.5	2.1	2	239	3.5	4.4	1.8	677	2.0	2.0	1.3
			6	213	2.8	2.8	138	3.8	3.2	3	106	5.2	6.6	2.8	301	3.0	2.9	2.0
			8	120	3.7	3.7	78	5.0	4.3	4	60	6.9	8.8	3.7	169	4.0	3.9	2.6
			10	77	4.6	4.6	50	6.3	5.3	5	38	8.7	11.0	4.6	108	5.0	4.9	3.3
FL	35°	1678	12	53	5.5	5.5	35	7.5	6.4	6	27	10.4	13.2	5.5	75	6.0	5.9	3.9
			4	252	2.8	2.8	164	3.8	3.2	2	126	3.5	8.6	2.8	357	2.0	3.1	1.9
			6	112	4.1	4.1	73	5.7	4.8	3	56	5.2	12.8	4.1	159	3.0	4.7	2.9
			8	63	5.5	5.5	41	7.6	6.4	4	32	6.9	17.1	5.5	89	4.0	6.3	3.9
WFL	50°	1678	10	40	6.9	6.9	26	9.6	8.0	5	20	8.7	21.4	6.9	57	5.0	7.8	4.9
			12	28	8.3	8.3	18	11.5	9.5	6	14	10.4	25.7	8.3	40	6.0	9.4	5.8
			4	124	3.4	3.4	81	4.8	3.9	2	62	3.5	14.8	3.4	175	2.0	4.1	2.4
			6	55	5.1	5.1	36	7.2	5.9	3	28	5.2	22.2	5.1	78	3.0	6.2	3.6
			8	31	6.8	6.8	20	9.6	7.8	4	16	6.9	29.6	6.8	44	4.0	8.3	4.8
			10	20	8.5	8.5	13	12.0	9.8	5	10	8.7	37.0	8.5	28	5.0	10.4	6.0
			12	14	10.2	10.2	9	14.5	11.8	6	7	10.4	44.3	10.2	19	6.0	12.4	7.2