

# EU2C

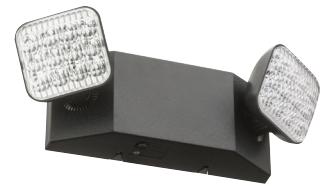
Commercial LED Emergency Lights

## Traditional Form and Reliable Performance

The EU2C by Lithonia Lighting® is a dual lamp head LED emergency light. Certified Title 20 for small battery charger systems the EU2C provides emergency lighting while saving energy. It is ideal for lighting the path-of-egress in applications such as stairways, hallways and other small spaces at lower mounting heights.

### Features and Benefits

- Test switch, status indicator and rechargeable battery for easy maintenance and manual initiation of monthly test
- Optional self-diagnostic feature automatically performs monthly and annual testing
- High-output battery to power both local and optional LED remote lamp heads simultaneously
- Minimum of 90-minutes illumination upon the loss of AC power
- UL damp location listed



Visit [www.lithonia.com](http://www.lithonia.com) for more information.