

FEATURES & SPECIFICATIONS

INTENDED USE

For use with housings L3 and L3R.

CONSTRUCTION

Antique bronze, oil-rubbed bronze, brushed nickel and white finishes are one-piece aluminum spheres.

25 degree vertical tilt standard.

350 degree horizontal rotation.

Integral flange.

INSTALLATION

Socket to trim interface.

Retaining clips installed at factory to top of reflector to hold trim inside housing.

LISTINGS

UL Listed to US and Canadian safety standards.

Damp location listed.

Pull on clip Patent No.(US) 5707143, (Canada) 2193902.

WARRANTY

1-year limited warranty. Complete warranty terms located at

www.acuitybrands.com/CustomerResources/Terms_and_conditions.aspx

Actual performance may differ as a result of end-user environment and application.

Note: Specifications subject to change without notice.

Catalog Number
Notes
Type

4" Finishing Trim

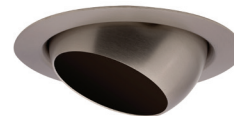
3E1

STANDARD EYEBALL

Narrow Flange



Antique bronze



Brushed nickel



Oil-rubbed bronze

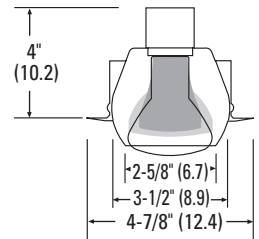
Specifications

Height: 4 (10.2)

Lamp opening: 3-1/2 (8.9)

Diameter: 4-7/8 (12.4)

All dimensions are inches (centimeters) unless otherwise indicated.



ORDERING INFORMATION

For shortest lead times, configure product using **bolded options**.

Example: 3E1

3E1	
Series	Finish
3E1	(blank) White
	MW Matte white
	BN Brushed nickel
	BZA Antique bronze
	ORB Oil-rubbed bronze

Housing Compatibility: Housing and trim ordered separately.

Application	Source	Maximum wattage	Housing
IC	Incandescent	50 PAR20	L3, L3R
		50 R20	

3E1 4" Standard Eyeball Full Reflector Trim

For BR and PAR reflector lamps, see lamp manufacturer's published raw lamp data for photometrics.