



CSXW LED LED Wall Luminaire



Catalog
Number

Notes

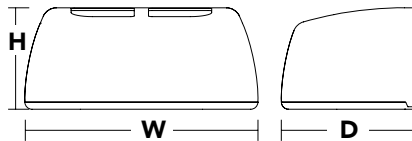
Type

Hit the Tab key or mouse over the page to see all interactive elements.

CONTOUR
SERIES

Specifications

Height:	7-1/8" (29.2 cm)
Width:	16-3/8" (41.6cm)
Depth:	9-5/16" (23.6 cm)
Weight (max):	30 lbs (13.6 kg)



Introduction

The Contour® Series luminaires offer traditional square dayforms with softened edges for a versatile look that complements many applications.

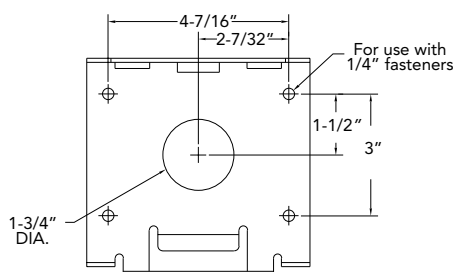
The CSXW LED combines the latest in LED technology with the familiar aesthetic of the Contour® Series for stylish, high-performance illumination that lasts. It is ideal for replacing 100-400W metal halide in wall-mounted applications with typical energy savings of 80% and expected service life of over 100,000 hours.

Ordering Information

EXAMPLE: CSXW LED 30C 700 40K T3M MVOLT DDBXD

CSXW LED	LEDs	Drive current	Color temperature ¹	Distribution	Voltage	Mounting	Options	Finish (required)
CSXW LED	30C 30 LEDs	700 700 mA 1000 1000 mA	40K 4000K 50K 5000K	T2M Type II/ Type III TFTM Type IV	MVOLT ² 120 ² 208 ² 240 ² 277 ² 347 ³ 480 ³	Shipped included (blank) Surface mount Shipped separately BBW Surface-mounted back box (for conduit entry) ⁴	Shipped installed PE Photoelectric cell, button type ^{5,6} DMG 0-10v dimming wires pulled outside fixture (for use with an external control, ordered separately) SF Single fuse (120, 277, 347V) ⁷ DF Double fuse (208, 240, 480V) ⁷ Shipped separately⁴ VG Vandal guard	DDBXD Dark bronze DBLXD Black DNAXD Natural aluminum DWHXD White DDBTXD Textured dark bronze DBLBXD Textured black DNATXD Textured natural aluminum DWHGXD Textured white

Mounting Detail



Accessories

Ordered and shipped separately.

CSXWBBW DDBXD U	Back box accessory (specify finish)
CSXWVG U	Vandal guard accessory

NOTES

- Configured with 4000K (/40K) provides the shortest lead times. Consult factory for 5000K (/50K) lead times.
- MVOLT driver operates on any line voltage from 120-277V (50/60 Hz). Specify 120, 208, 240 or 277 options only when ordering with fusing (SF, DF options) or photocontrol (PE option).
- Available with 700 mA options only (30C 700).
- Also available as a separate accessory; see Accessories information at left.
- Photocontrol (PE) requires 120, 208, 240, 277 or 347 voltage option.
- Must be ordered with fixture; cannot be field installed.
- Single fuse (SF) requires 120, 277 or 347 voltage option. Double fuse (DF) requires 208, 240 or 480 voltage option.

Performance Data

Lumen Output

Lumen values are from photometric tests performed in accordance with IESNA LM-79-08. Data is considered to be representative of the configurations shown, within the tolerances allowed by Lighting Facts. Contact factory for performance data on any configurations not shown here.

LEDs	Drive Current (mA)	Performance Package	System Watts	Dist. Type	40K					50K				
					Lumens	B	U	G	LPW	Lumens	B	U	G	LPW
30C	700 mA	30C 700 --K	69W	T2M	7,561	2	0	2	110	7,608	2	0	2	110
				TFTM	8,083	1	0	2	117	8,134	1	0	2	118
	1000 mA	30C 1000 --K	104W	T2M	11,321	2	0	2	109	10,422	2	0	2	100
				TFTM	11,942	2	0	2	115	11,142	2	0	2	107

Lumen Ambient Temperature (LAT) Multipliers

Use these factors to determine relative lumen output for average ambient temperatures from 0-40°C (32-104°F).

Ambient		Lumen Multiplier
0°C	32°F	1.02
10°C	50°F	1.01
20°C	68°F	1.00
25°C	77°F	1.00
30°C	86°F	1.00
40°C	104°F	0.99

Projected LED Lumen Maintenance

Data references the extrapolated performance projections for the **CSXW LED** platform in a **25°C ambient**, based on 10,000 hours of LED testing (tested per IESNA LM-80-08 and projected per IESNA TM-21-11).

To calculate LLF, use the lumen maintenance factor that corresponds to the desired number of operating hours below. For other lumen maintenance values, contact factory.

Operating Hours	0	25,000	50,000	100,000
Lumen Maintenance Factor	1.0	0.94	0.91	0.85

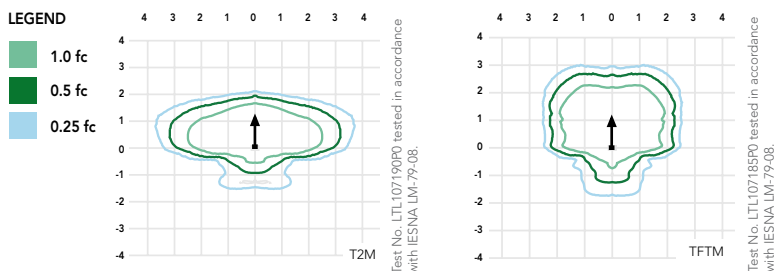
Electrical Load

Number of LEDs	Drive Current (mA)	System Watts	Current (A)					
			120V	208V	240V	277V	347V	480V
30C	700	69W	0.695	0.412	0.367	0.331	0.247	0.186
	1000	104W	1.034	0.599	0.528	0.472	0.382	0.302

Photometric Diagrams

To see complete photometric reports or download .ies files for this product, visit Lithonia Lighting's [CSXW homepage](#).

Isofootcandle plots for the CSXW LED 30C 1000 40K. Distances are in units of mounting height (20').



FEATURES & SPECIFICATIONS

INTENDED USE

The Contour Series Wall LED luminaire is ideal for commercial building mounted applications from over-the-door to 20 ft mounting heights.

CONSTRUCTION

Rugged, die-cast, single-piece aluminum housing. Unique flow-through design for optimized thermal management. Modularity allows for ease of maintenance and potential for future system upgrades. Metallic screen covers the top of the housing, preventing debris build-up while allowing for air flow. Housing is completely sealed against moisture and environmental contaminants.

FINISH

Exterior parts are protected by a zinc-infused Super Durable TGIC thermoset powder coat finish that provides superior resistance to corrosion and weathering. A tightly controlled multi-stage process ensures a minimum 3 mils thickness for a finish that can withstand extreme climate changes without cracking or peeling.

OPTICS

Precision-molded acrylic lenses provide optimal luminaire spacing and improved uniformity. Lenses are indexed to the circuit board to ensure consistent optical alignment and delivering repeatable photometric performance. Light engines are available in standard 4000K (70 CRI) or optional 5000K (67 CRI) configurations. The CSXW has zero uplight and qualifies as a Nighttime Friendly™ product, meaning it is consistent with the LEED® and Green Globes™ criteria for eliminating wasteful uplight.

ELECTRICAL

Light engine consists of 30 high-efficacy LEDs mounted to a metal-core circuit board to maximize heat dissipation and promote long life (100,000 hrs at 40°C, L70). Class 1 electronic driver has a power factor >90%, THD <20%, and has an expected life of 100,000 hours with <1% failure rate. Easily-serviceable surge protection device meets a minimum Category C Low operation (per ANSI/IEEE C62.41.2).

INSTALLATION

Universal mounting mechanism with integral mounting support allows fixture to hinge down. Bubble level provides correct alignment with every installation.

LISTINGS

CSA Certified to U.S. and Canadian standards. Rated for -40°C minimum ambient. Light engine is IP66 rated. Luminaire is IP65 rated.

DesignLights Consortium® (DLC) qualified product. Not all versions of this product may be DLC qualified. Please check the DLC Qualified Products List at www.designlights.org to confirm which versions are qualified.

BUY AMERICAN ACT

This product is assembled in the USA and meets the Buy America(n) government procurement requirements under FAR, DFARS and DOT regulations. Please refer to www.acuitybrands.com/resources/buy-american for additional information.

WARRANTY

5-year limited warranty. This is the only warranty provided and no other statements in this specification sheet create any warranty of any kind. All other express and implied warranties are disclaimed. Complete warranty terms located at: www.acuitybrands.com/support/warranty/terms-and-conditions

Note: Actual performance may differ as a result of end-user environment and application. All values are design or typical values, measured under laboratory conditions at 25°C. Specifications subject to change without notice.



COMMERCIAL OUTDOOR

One Lithonia Way • Conyers, Georgia 30012 • Phone: 800-705-SERV (7378) • www.lithonia.com
© 2012-2023 Acuity Brands Lighting, Inc. All rights reserved.

CSXW-LED
Rev. 01/25/23