



FEATURES & SPECIFICATIONS

INTENDED USE — Emergency Lighting Micro Inverter works in conjunction with a fluorescent or LED fixture to create an emergency lighting system. The inverter operates a maximum load of 20 to 25W at unity power factor. It allows the connected fixtures to be on, off, switched or dimmed without affecting emergency operation. The Inverter provides power to the input side of the fixture, including the ballast, and can be used with indoor or outdoor emergency fixture applications.

CONSTRUCTION — Steel case, with a single pole (Momentary) test switch and pilot light.

ELECTRICAL — Lamp compatibility: LED, and fluorescent. Single Pole (Momentary) test switch and pilot light. 23" of armored cable.

Input: 120V or 277V

Output: 120V/277V Auto select, 60Hz

BATTERY — High-temperature maintenance free nickel-cadmium battery, charger and electronic circuitry constructed in a steel case. 24 hour recharge.

INSTALLATION — The inverter does not affect normal fixture operation and may be used switched or un-switched. Line voltage allows for remote mounting up to 250 feet maximum. Back mount only.

LISTINGS — Underwriters Laboratories in accordance with the standards set forth in UL 924, "Emergency Lighting and Power Equipment," and by the Canadian Standards Association (CSA) in accordance with the standards set forth in C22.2 No. 141, "Unit Equipment for Emergency Lighting." The EAC ISSM 20WB 120/277 is UL Listed and CSA Certified for field installation. Emergency illumination time exceeds the National Electrical Code (NEC), Life Safety Code (NFPA- LSC), National Building Code of Canada (NBC), National Fire Code of Canada (NFC) and UL 90-minute requirements.

UL and CSA 20W (0°C to 50°C) 32°F to 122°F

UL only 25W (0°C to 45°C) 32°F to 113°F

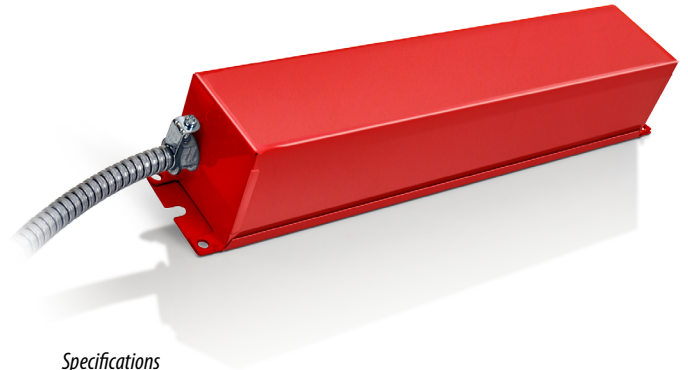
WARRANTY — 5-year limited warranty. Complete warranty terms located at: www.acuitybrands.com/CustomerResources/Terms_and_conditions.aspx

Note: Actual performance may differ as a result of end-user environment and application. Specifications subject to change without notice.

Catalog Number
Notes
Type

EAC ISSM

AC Power System



Specifications

Length: 16.6
 Depth: 2.85
 Height: 2.80
 Weight: 5 lbs.

ORDERING INFORMATION

Lead times will vary depending on options selected. Consult with your sales representative.

Example: EAC ISSM 20WB 120/277

EAC	ISSM	20WB	120/277
Series ¹	System	VA rating	Voltage
EAC Emergency AC power system	ISSM Interruptible	20WB	120/277

Notes
 1 Not CA Title 20 compliant.

SPECIFICATIONS

Electrical Specifications		
Rating	Input voltage	Output watts
20WB	120	20
25WB	277	25

Notes

- 1 At 77°F (25°C).
- 2 All life safety equipment, including emergency lighting for path of egress, must be maintained, serviced and tested in accordance with all National Fire Protection Association (NFPA) and local codes. Failure to perform the required maintenance, service or testing could jeopardize the safety of occupants and will void all warranties.
- 3 Optimum ambient temperature range where unit will provide capacity for 90 minutes. Higher and lower temperatures affect life and capacity. Consult factory for detailed information.

MOUNTING

All dimensions are inches (centimeters) unless otherwise indicated.

