

Catalog Number	
Notes	Type

FEATURES & SPECIFICATIONS

INTENDED USE

The OnePass Fixture Cable (OFC), Cable 1 port (OC1), Cable 2 port (OC2), and Cable 3 Port (OC3) are male/female cables that provides additional length throughout the RELOC system. Cables can also provide power to miscellaneous devices such as exits, emergency units, convenience power and access floor systems. The OFC attaches directly into the access plate or through any 1/2" trade-size knockout. The OC2 is a splitter and cable extender in one easy-to-use component. The OC2 All Metal Housings (AMH) provides installers options for how to configure the system based on specification requirements. The OC3 is a splitter and cable extender in one component.

ELECTRICAL

- Rated for use on 20-amp branch circuits.
- Safety-keying prevents accidental mating of components with different voltages.
- C125 option includes three 12 AWG conductors and 18 AWG shielded pair for controls wiring. (-20°C to +90°C).
- The OC2 conductors are 10 AWG or 12 AWG copper conductors with -20°C to +90°C thermoplastic insulation rated 600V. It includes a fully rated No. 12 AWG & 10 AWG grounding conductor.
- The OC1, OC2 with AMH option, and OC3 are 12 AWG copper with -20°C to +90°C thermoplastic insulation rated 600V. It includes a fully rated No. 12 AWG grounding conductor.
- The OFC Fixture leads are No. 18 AWG solid copper with pre-stripped, solid-color leads for easy installation into side, back or push-in-type terminals.

SYSTEM FEATURES

- Pin and socket contacts.
- Color-coded labels for quick voltage identification.
- Available in varying lengths to suit most common fixture spacing requirements.
- Auto-latching springs prevent accidental disengagement.
- Available with green armor standard for easy identification in healthcare facilities (HCF option).
- Dust Cover available for unused ports: RDC3 METAL DUST COVER CSA/UL J50 (available job pack of 50 only)
- The OC1, OC2, and OC3 EXT option enables them to be installed in hot and cold applications (-40° to +90°C).
- Type of insulation for EXT option is based on NEC Table 310.104(A).
- Non-plenum rated OC2 plastic housing.
- Plenum rated low voltage cable (LVC option)
- The OC1 QFOP and 8200P cable options provide a conversion between legacy RELOC wiring systems. The male end will be the legacy system and the female end will be the One Pass OC1.

LISTINGS

- C-UL-US listed for indoor, dry, and accessible locations
- Meets or exceed all the requirements of UL183 and NEC (NFPA70) Article 604 for manufactured wiring systems
- C125 option meets NEC requirements for separation of Class 2 and Class 3 circuits from Class 1 circuits by a barrier as defined by Article 725.136(B).
- Meets NEC requirements for redundant ground paths for patient care areas in healthcare facilities (HCF option).
- Canadian Patent No. 2,845,603 (Class I, Class II)

GOVERNMENT PROCUREMENT

- BAA – Buy America(n) Act: Product qualifies as a domestic end product under the Buy American Act as implemented in the FAR and DFARS. Product also qualifies as manufactured in the United States under DOT Buy America regulations.
- BABA – Build America Buy America: Product qualifies as produced in the United States under the definitions of the Build America, Buy America Act.
- Please refer to www.acuitybrands.com/buy-american for additional information.

WARRANTY

- 5-year limited warranty. This is the only warranty provided and no other statements in this specification sheet create any warranty of any kind. All other express and implied warranties are disclaimed. Complete warranty terms located at: www.acuitybrands.com/support/warranty/terms-and-conditions

Note: Actual performance may differ as a result of end-user environment and application. Specifications subject to change without notice.

OnePass® Cables

OFC, OC1, OC2, OC3



OC1
Cable 1 Port



OC2
Cable 2 Port



OC3
Cable 3 Port



OFC
Fixture Cable



Items marked by a shaded background qualify for the Design Select program and ship in 15 days or less. To learn more about Design Select, visit www.acuitybrands.com/designselect.
*See ordering tree for details

ORDERING INFORMATION

For shortest lead times configure product using **bolded options**.

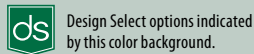
Example: OC1 277 12/3G 09

Series	Voltage	Conductors	Length	Conversion Connector	Controls Wiring
OC1	120 120V	12/2G Three 12 AWG conductors, including one 12 AWG ground	01 ft up to 50 ft	8200PM 820 system to One Pass system converter cable, 820 female connector with One Pass male connector ‡	(blank) Not required C12S Integrated CI, CII rated line voltage and signal wires ‡
	208 208V				
	240 240V	12/3G Four 12 AWG conductors, including one 12 AWG ground		8200PF 820 system to One Pass system converter cable, 820 male connector with One Pass female connector ‡	
	277 277V			QFOPM QuickFlex system to One Pass system converter cable, QuickFlex female connector with One Pass male connector ‡	
	347 347V			QFOFP QuickFlex system to One Pass system converter cable, QuickFlex male connector with One Pass female connector ‡	
480 480V	12/4G Five 12 AWG conductors, including one 12 AWG ground				

Color	Options	CAT5 Cable
(blank) Not required RD Red ‡	(blank) Not required 2N Two circuit, two neutral ‡ HCF Meets healthcare facility requirements ‡ X Cross Over Cable ‡	(blank) Not required CAT5_ Pre-terminated and tested CAT5 cable attached ‡

‡ Option Value Ordering Restrictions

Option value	Restriction
2N	2N option available only in 120V, 277V and 347V, Available with 12/4G conductors only.
8200PM, 8200PF	Converter cables used to convert 820 legacy system to OnePass. Only available in 1ft lengths, 120 or 277 volt. 8200P must be ordered with 12/4G.
C12S	C12S must use 12/2G conductors.
CAT5_	Must specify length. Example: CAT510. See spec sheet RCAT5 for details. CAT5 length must be 2FT longer than OC1. When used with OCS, OCU or OD fixture drop, CAT5 length must include the length of the OC1 and the length of drop for the fixture plus 2FT.
HCF	HCF available with 12/4G conductors only. HCF not available with controls wiring options C12S or CAT5.
QFOPM, QFOFP	Converter cables used to convert QF legacy system to OnePass. Only available in 1ft lengths, 120 or 277 volt. QFOP must be ordered with 12/3G.
RD	Non-plenum rated color cable available up to 35ft only.
X	Available with 12/3G conductors only. Hot conductors 1 and 2 alternate internally to the cable.



ORDERING INFORMATION

For shortest lead times configure product using **bolded options**.

Example: OC2 277 12/4G 25

Series	Voltage	Conductors	Length	Controls Wiring	Color	Options
OC2	120 120V	10/2G Three 10 AWG conductors, including one 10 AWG ground	01 ft up to 75 ft	(blank) Not required C12S Integrated CI, CII rated line voltage and signal wires ‡	(blank) Not required RD Red ‡	(blank) Not required 2N Two circuit, two neutral ‡ AMH All metal housings ‡ EXT Extreme temperature rating conductors ‡
	208 208V					
	240 240V	10/3G Four 10 AWG conductors, including one 10 AWG ground				
	277 277V			10/4G Five 10 AWG conductors, including one 10 AWG ground		
	347 347V					
	480 480V	12/2G Three 12 AWG conductors, including one 12 AWG ground				
	12/3G Four 12 AWG conductors, including one 12 AWG ground					
	12/4G Five 12 AWG conductors, including one 12 AWG ground					

‡ Option Value Ordering Restrictions

Option value	Restriction
2N	2N option available only in 120V, 277V and 347V, Available with 12/4G conductors only.
AMH	Available with 12/2G, 12/3G, 12/4G conductors.
C12S	C12S must use 12/2G conductors.
EXT	Required for EXTREME hot and cold temperature applications (-40° to 90°C). Available with 10/2G, 10/3G, 12/2G, and 12/3G conductors.
RD	Non-plenum rated color cable available up to 35ft only.

ORDERING INFORMATION

For shortest lead times configure product using **bolded options**.

Example: OC3 277 12/3G 15

Series	Voltage	Conductors	Length	Color	Options
OC3	120 120V	12/2G Three 12 AWG conductors, including one 12 AWG ground	01 ft up to 50 ft	(blank) Not required	(blank) Not required 2N Two circuit, two neutral ‡ EXT Extreme temperature rating conductors ‡
	208 208V				
	240 240V	12/3G Four 12 AWG conductors, including one 12 AWG ground		RD Red ‡	
	277 277V				
	347 347V	12/4G Five 12 AWG conductors, including one 12 AWG ground			
	480 480V				

‡ Option Value Ordering Restrictions

Option value	Restriction
2N	2N option available only in 120V, 277V and 347V. Available with 12/4G conductors only.
EXT	Required for EXTREME hot and cold temperature applications (-40° to 90°C). Available with 10/2G, 10/3G, 12/2G, and 12/3G conductors.
RD	Non-plenum rated color cable available up to 35ft only.

ORDERING INFORMATION

For shortest lead times configure product using **bolded options**.

Example: OFC 277 12/3G 11

Series	Voltage	Conductors	Length	Modular Plug
OFC	120 120V	12/2G Three 12 AWG conductors, including one 12 AWG ground	01 ft up to 50 ft	(blank) Not required RRL RELOC® - Ready Luminaire Universal Fixture Connector ‡
	208 208V			
	240 240V	12/3G Four 12 AWG conductors, including one 12 AWG ground		
	277 277V			
	347 347V	12/4G Five 12 AWG conductors, including one 12 AWG ground		
	480 480V			

Controls Wiring	Color	Options	CATS Cable
(blank) Not required	(blank) Not required RD Red	(blank) Not required	(blank) Not required
C12S Integrated CI, CII rated line voltage and signal wires ‡		2N Two circuit, two neutral ‡ G Ground wire ‡ HCF Meets healthcare facility requirements ‡ X Cross Over Cable ‡	CAT5_ Pre-terminated and tested CAT5 cable attached ‡

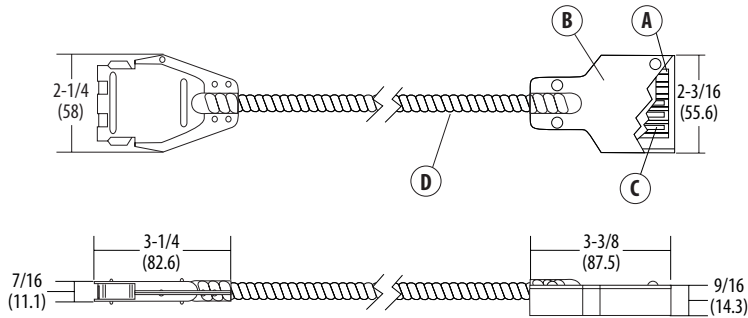
‡ Option Value Ordering Restrictions

Option value	Restriction
2N	2N option available only in 120V, 277V and 347V. Available with 12/4G conductors only.
C12S	C12S must use 12/2G conductors. G option required with C12S.
CAT5_	Must specify length. Example: CAT510. See spec sheet RCATS for details. CAT5 length must be 2FT longer than OFC. When used with OCS, OCU or OD fixture drop, CAT5 length must include the length of the OC1 and the length of drop for the fixture plus 2FT.
G	Required for use in Canada. Required for C12S, HCF and RRL option.
HCF	Available with 12/4G conductors only. HCF not available with controls wiring options C12S or CAT5. G option required with HCF.
RRL	If RRL selected, fixture must have RRL and wiring instruction. See fixture spec sheet for details. See RRL spec sheet for connector details. G option required with RRL.
X	X option available only in 120V, 277V and 347V. Available with 12/3G conductors only. Hot conductors 1 and 2 alternate internally to the cable.

DIMENSIONS

Dimensions are shown in inches (millimeters)

OC1 – Cable 1 Port



A – Die-cast zinc with zinc-plated CRS cover

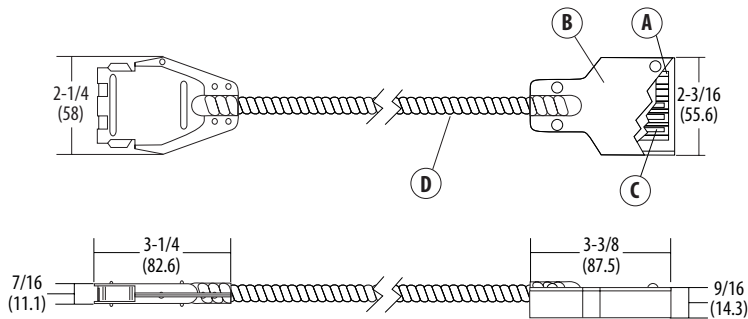
B – UL recognized connector body

C – Tin-plated brass contacts

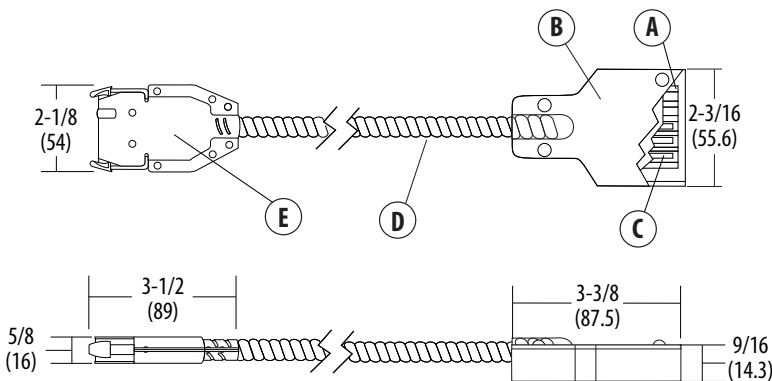
D – MC Cable standard. HCF MC, C12S MC optional, Isolated ground wire standard with flexible metal conduit.

E – 18-gauge galvanized steel cover, zinc alloy casting

OC1 – Converter Cable: Option (8200P)



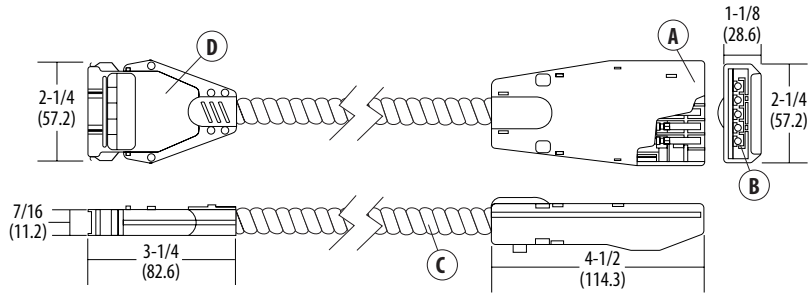
OC1 – Converter Cable: Option (QFOP)



DIMENSIONS

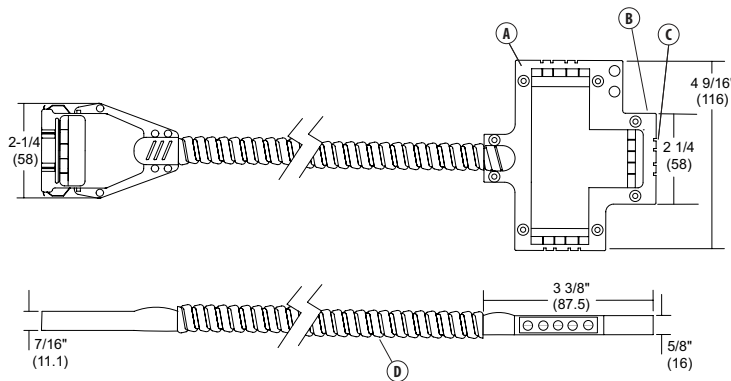
Dimensions are shown in inches (millimeters)

OC2 – Cable 2 Port



- A** – Injection-molded, high-impact polymeric compound enclosure
- B** – Tin-plated, brass contacts
- C** – MC Cable standard. C12S MC optional, Isolated ground wire standard with flexible metal conduit.
- D** – 18-gauge galvanized steel cover, zinc alloyed casting

OC3 – Cable 3 Port

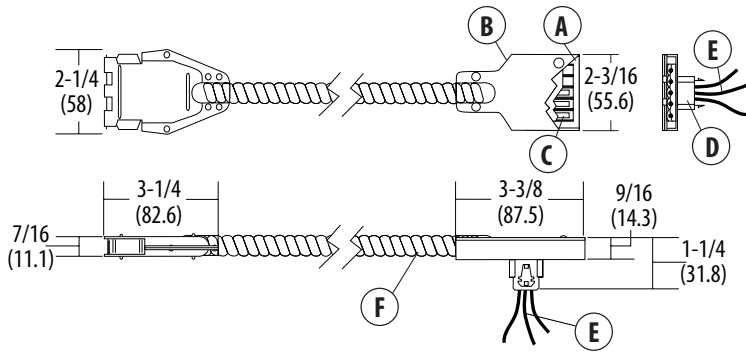


- A** – Die-cast zinc with zinc-plated CRS cover
- B** – UL recognized connector body
- C** – Tin-plated brass contacts
- D** – MC Cable standard. HCF MC, C12S MC optional, Isolated ground wire standard with flexible metal conduit.

DIMENSIONS

Dimensions are shown in inches (millimeters)

OFC - Fixture Cable



- A** – UL-recognized connector body
- B** – Die-cast zinc with zinc-plated CRS cover
- C** – Tin-plated, brass contacts
- D** – Cast snap-in fitting fits 1.2" trade-size K.O. and provides grounding
- E** – No. 18 AWG solid copper wires rated at 600V, 90°C thermoplastic insulation with stripped leads
- F** – MC cable standard. HCF MC, C12S MC optional.

NOTES

- One, two or three hot conductors in 120V and 277V as required.
- Rated for 20-amp capacity.
- Prefabricated standard selector cable carrying No. 12 AWG copper conductors. 600V, 90°C thermoplastic insulation and fully rated bare grounding conductor.
- Standard selector cable provides auto-grounding to fixture unless specified otherwise.

OnePass OFC Wire Color Chart

120V, 277V, 347V Standard Wire Colors					
Position	1	2	3	4	5
Conductor	Ground	Hot #1	Hot #2	Hot #3	Neutral #1
120V & 347V	Bare or Green	Black	Red	Blue	White
277V	Bare or Green	Brown	Orange	Yellow	Gray
208V, 240V, 480V Standard Wire Colors					
Position	1	2	3	4	5
Conductor	Ground	Hot #1	Hot #2	Hot #3	Hot #4
208V & 240V	Bare or Green	Black	Red	Blue	Violet
480V	Bare or Green	Brown	Orange	Yellow	Violet
120V, 277V, 347V Two Circuit, Two Neutral (2N option)					
Position	1	2	3	4	5
Conductor	Ground	Hot #1	Hot #2	Neutral #2	Neutral #1
120V & 347V	Bare or Green	Black	Red	Gray	White
277V	Bare or Green	Brown	Orange	White	Gray
120V, 277V, 347V Class I, Class II (C12S option)					
Position	1	2	3	4	5
Conductor	Hot #1	Neutral #1	Ground	Data #1	Data #2
120V & 347V	Black	White	Bare or Green	Violet	Pink (or Gray)
277V	Brown	Gray	Bare or Green	Violet	Pink (or Gray)
208V & 240V	Brown	Orange	Bare or Green	Violet	Pink (or Gray)
480V	Brown	Orange	Bare or Green	Violet	Pink (or Gray)

Note: Wire colors are specific for cables with exposed wireleads.

SYSTEM VIEW

System View designs are for illustrative purposes only.

